



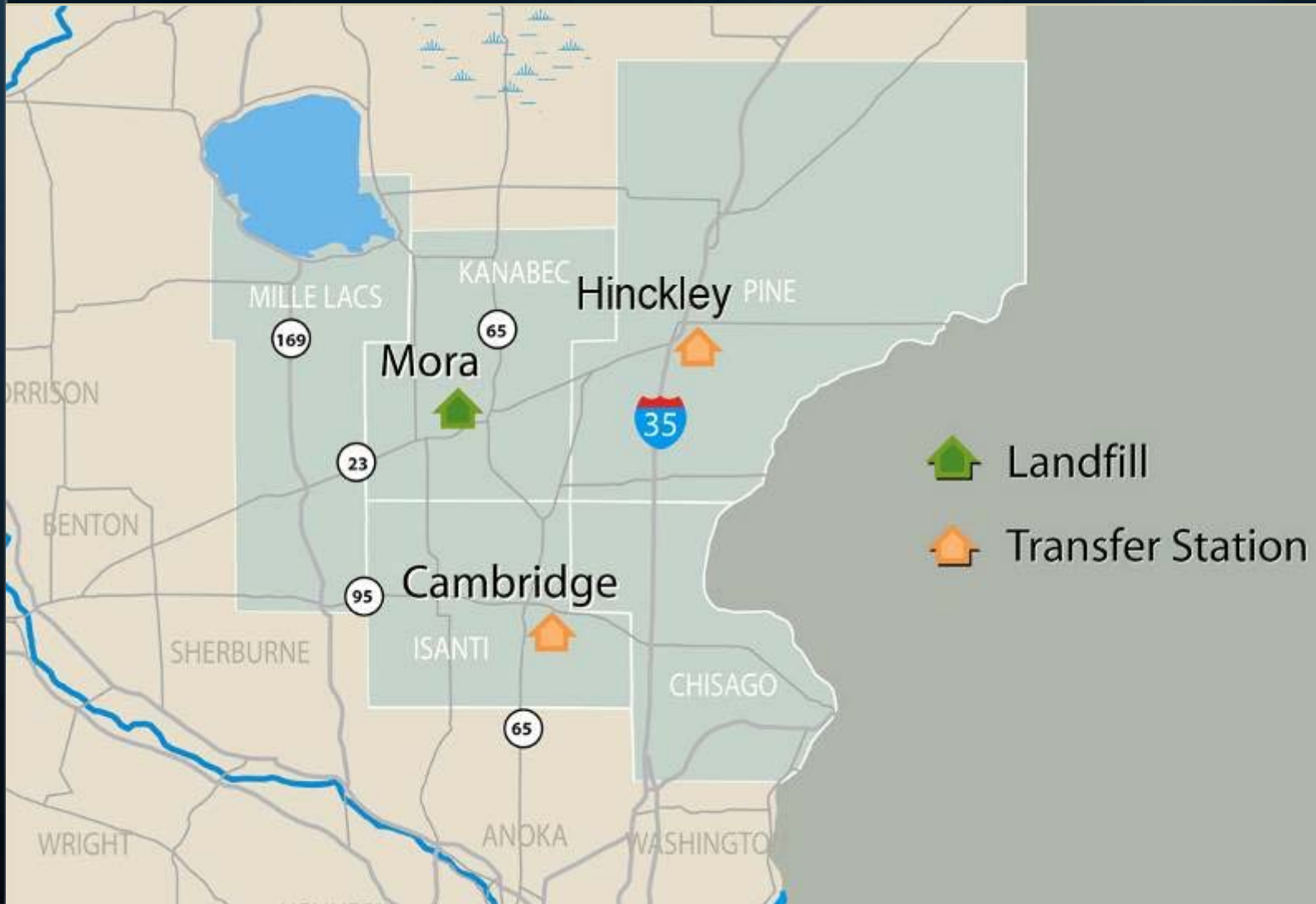
# East Central Solid Waste Commission

---

Waste Designation Initiative

2008

# East Central Solid Waste Commission



# East Central Landfill

Joint Powers Agreement  
originally signed 1988

- Designation Plan 1988
- Lined Area and MSW Composting: 1991
- Designation Ordinance adopted by the County Boards: 1992
- End of Flow Control 1994
- MSW Composting failed: 1994-1999
- More cost competitive fee from \$87 during composting era to \$49 per ton.
- Currently 76,000 tons/year
- 5 lined phases
- 15.6 acres open
- Adoption of 10-year SWM Plan
- Remaining Life: 25+ years
- Permitting Expansion
- Landfill Gas Purchase Agreement with Southern Minnesota Municipal Power Agency (SMMPA)

# Commission Programs

- Electronics Recycling
- Mattress Recycling
- Appliance Recycling
- Burn Barrel Education
- Household Hazardous Waste Assistance
- Recycling – Scrap Metal, Cardboard
- Proposed - Wood Waste, Plastic, Paper and Glass Recycling

# The Toonies



The Toonies' ENVIRO-Show  
Fun, Interactive & Educational!  
[www.TheToonies.com](http://www.TheToonies.com)





# Recent Waste Tonnage

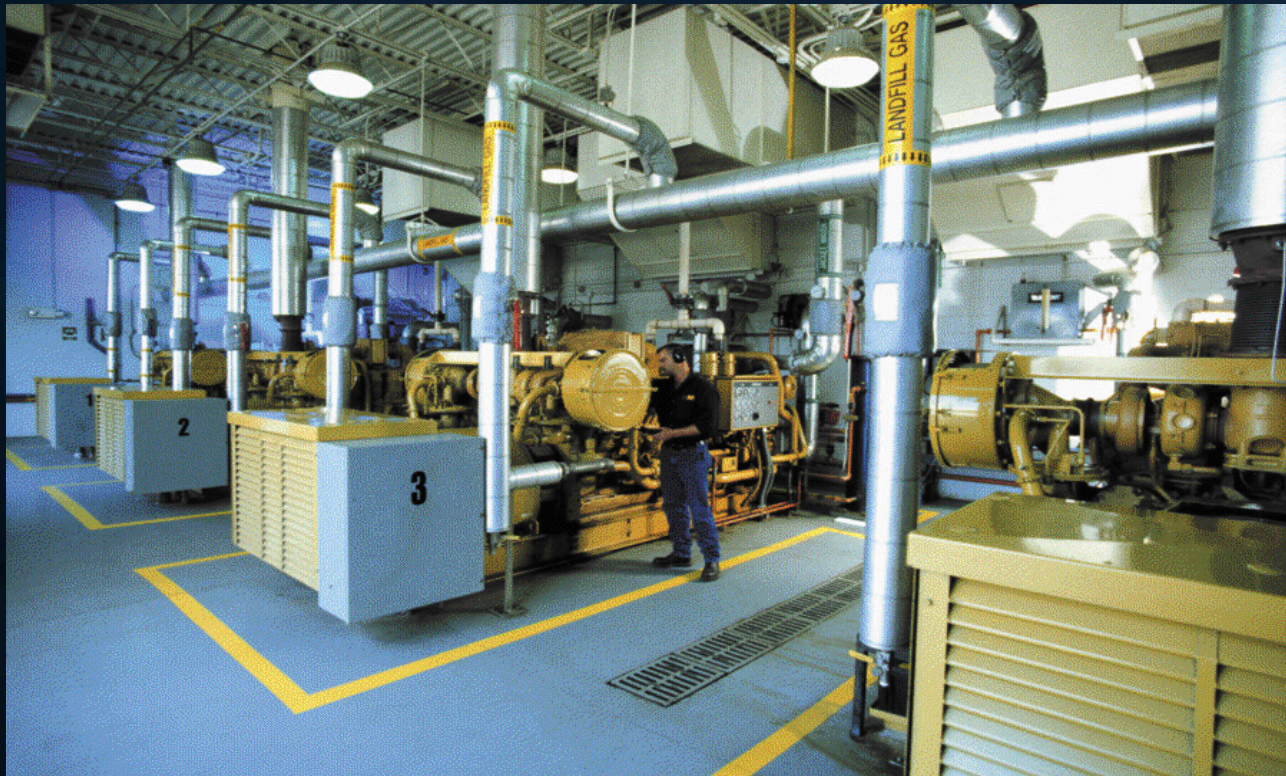
- 2001: 66,728 tons
- 2002: 70,027 tons
- 2003: 73,080 tons
- 2004: 75,984 tons
- 2005: 76,434 tons
- 2006: 74,912 tons
- 2007: 76,481 tons

# LFG System Improvements

- Active system conversion in 2005
- Connection to:
  - Closed landfill
  - Vertical wells
  - Recirculation system
  - Leachate cleanouts/SSRs
- Voluntary Odor and Migration Control



## 3.2 MW Engine Plant



# Carbon Credit Trading

- ECSWC carbon offset trader on Chicago climate Exchange
- In final verification process
- Eligibility based on voluntary status

# Attempts at Flow Control

- Designation Plan Adopted in 1988
- Hauler Delivery Agreement of 1996
- 1999 Attempt to Implement a Solid Waste Management Fee System
- 2005 – 2007, Designation Ordinance for solid waste disposal within Minnesota
- 2006, Additional rebate to contract haulers
- 2008, Designation Planning according to the Designation Statute

- ECSWC proactively managing all waste as required by rule and legislation.
- ECSWC is publicly owned and operated
- Tonnage has leveled off since 2004
- Need to maintain tonnage and recirculation to maintain gas generation
- Need to be able to finance expanded recycling opportunities, education, and assistance to counties with providing information and reporting.

## Key Points – United States Supreme Court Decision (April 30, 2007)

Reverses the Supreme Court decision in the 1994 *Carbone* case that prohibited local government action to direct waste to a publicly owned disposal facility.

Reverses the Supreme Court decision held that “flow control ordinances that direct waste to a publicly owned facility – but treat every private business, whether in-state or out-of-state, exactly the same – do not discriminate against interstate commerce for purposes of the Commerce clause.”

# Minnesota Statute 115A.02 Hierarchy



# Site Contacts

- Janelle Troupe, Executive Director,  
East Central Solid Waste Commission  
320-679-4930 ext. 101  
[jtroupe@youbetnet.net](mailto:jtroupe@youbetnet.net)
- Fred Doran, Project Engineer, R. W. Beck  
651-994-8415  
[fdoran@rwbeck.com](mailto:fdoran@rwbeck.com),